

# Outstanding Performance

## Specifications

Measurement Accuracy:	±0.1% subject to Application
Color Display:	5.7-inch LCD with touch-screen input
Calibrations:	Up to 50 calibrations Stored in non-volatile Flash memory
Operating System:	Windows CE ®
Dimensions:	381D x 305W x 203H
Power:	90-260VAC 50/60Hz 40W
Sample Holder:	75mm Dia. x 25mm Deep. Borosilicate window with plastic sealing cap.
Networking:	Ethernet TCP/IP
Calibration:	Pre-calibrated
Support	
Software:	Windows-based All-included.

## Options

USB Keyboard  
USB Mouse  
Profibus  
ProfiNet  
DeviceNet  
Calibration Standards

### Warranty

*All products manufactured by Sensortech Systems, Inc., are guaranteed against defects in material and workmanship for a period of one year from date of purchase. In the event any product manufactured by Sensortech proves to be defective within the warranty period, it will be repaired or replaced free of charge*

### Head Office MoistTech

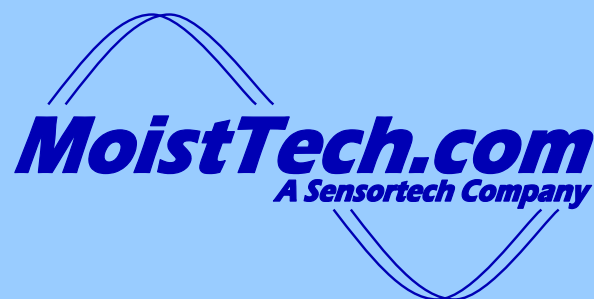
A Division of Sensortech Systems, Inc.  
5140 Commerce Avenue  
Moorpark, CA 93021, USA  
Ph: +1 805 378 1160 Fax: +1 805 378 1163  
[sales@sensortech.com](mailto:sales@sensortech.com)  
[www.moisttech.com](http://www.moisttech.com)

### Europe Office

Sensortech Systems Europe BV  
De Bloemendaal 2  
NL-5221 EC 's-Hertogenbosch  
Netherlands

### Asia Pacific Office

1/375 Pacific Highway  
Artarmon, NSW 2064, Australia  
Ph: +61 2 9438 4544 Fax: +61 2 9438 4322  
[seanh@sensortech.com](mailto:seanh@sensortech.com)



# IRMA-LAB 858

*Laboratory & At-Line  
InfraRed Moisture Analyzer  
Measures up to 3 Constituents*



- *Dependable*
- *Precision Measurement*
- *Fastest Test Time (1 Second)*
- *Sample Stability (Patent Pending)*

# Latest Near Infrared Moisture Analyzer

## Fastest At-Line Moisture Testing

The IRMA-LAB 858 is the latest MoistTech analyzer featuring:

- Advanced IR-3000 technology
- Embedded PC with touch screen input and full-color display
- Ethernet communications for networking
- Completely sealed sample chamber maintains sample stability throughout tests
- Detailed operator screen with prompts
- Fastest test time – less than 1 second
- Simple calibration procedure
- Totally unaffected by ambient lighting



Sample chamber showing underside viewing window & sealed cover

### Advanced NIR Sensor Technology

MoistTech's well-proven IR-3000 optics and electronics are utilized in this unique Near Infrared laboratory analyzer. Superb accuracy and resolution are combined with the shortest test time of any similar technology gauge enabling rapid throughput of samples.

Detailed operator screen provides time and date of sample, process location of sample and operator name.

Calibration software is built-in with regression analysis and storage of calibration data.

Up to 99 calibrations may be stored in embedded memory.

Options include remote mouse and keyboard and proprietary network support for Profibus, DeviceNet and ProfiNet.



Multiple Ethernet and USB ports facilitate peripherals and network

### APPLICATIONS

#### TOBACCO

- Bright/Burley
- Turkish
- Cut Lamina
- Stems
- Leaf
- Reconstituted
- Filler
- Expanded
- CRS
- Cased Tobacco
- Snuff
- Chewing Tobacco
- Cigar

#### FOOD

- Cereals
- Coffee
- Tea
- Milk Powder
- Casein
- Milled Products
- Cookies
- Crackers
- Citrus Pulp
- Animal Feed
- Potato Powder/Granules
- Spent Grain

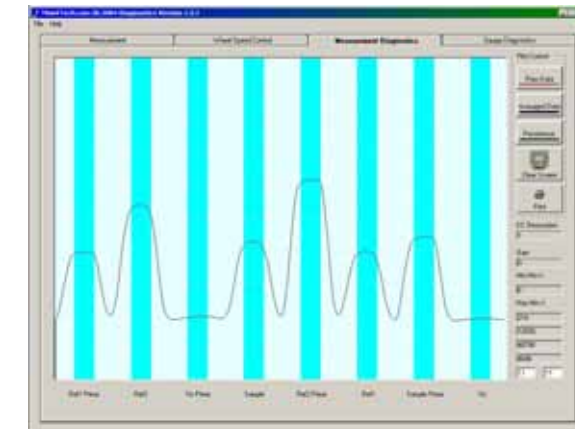
#### WOOD PRODUCTS

- Wood Fibers
- Shavings
- Particles/Granules
- Bark
- Hog
- Fuel
- Resin

#### GENERAL

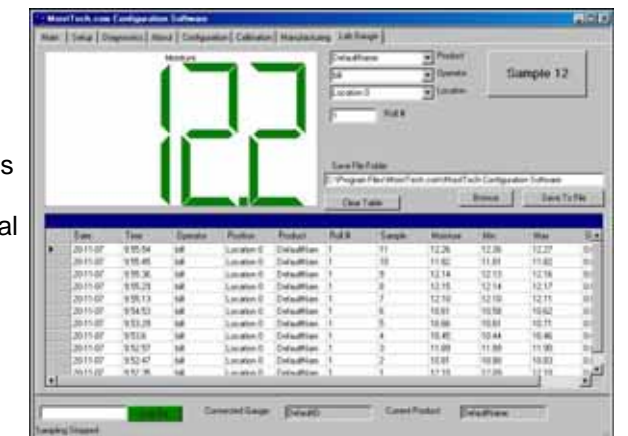
- Fertilizers
- Detergents
- Soap Powder/Flakes
- Ceramics
- Powders & Granules

Large Clear Operator Display – Full Color



All IR-3000 series instruments feature advanced instrument diagnostics accessible locally or via internet.

Detailed data stored in embedded memory provides time, date, process location operator name and statistical analysis of data.



*Sealed sample eliminates loss of moisture during test*

*Accuracy – Speed – Dependability*